



REPUBLIC OF THE PHILIPPINES

DEPARTMENT OF EDUCATION

Regional Office No. 02 (Cagayan Valley)

Regional Government Center, Carig Sur, Tuguegarao City, 3500



MEMORANDUM

To: Schools Division Superintendents

Attention: Division MTB-MLE Coordinators

From: **ESTELA L. CARIÑO, EdD, CESO IV**
Director IV/Regional Director

FOR THE REGIONAL DIRECTOR:

ATTY. JOSE MARIO M. MACARILAY
Chief Administrative Officer

Date: October 4, 2019

Subject: SUBMISSION OF DATA ON THE IMPLEMENTATION OF RA 10533,
MOTHER-TONGUE BASED MULTILINGUAL EDUCATION (MTB-MLE) IN
THE K TO 12 BASIC EDUCATION CURRICULUM

1. To strengthen the implementation of Mother-Tongue Based Multilingual Education in the Philippines, the Office of Curriculum and Instruction earnestly requests for the following data, to wit:
 - a. Abstracts of all research projects on MTB-MLE undertaken by teachers and field officials, including Masters' thesis and PhD/EdD dissertations for the last five years;
 - b. List of schools with highly effective MTB-MLE implementation, including identified enabling factors for effectiveness;
 - c. Consolidated and prioritized lists of factors that hinder the implementation of MTB-MLE; and
 - d. Recommendations on how MTB-MLE implementation may be further strengthened.
2. Please submit the needed data on or before October 18, 2019 at clmd.region2@deped.gov.ph or james.pamittan@deped.gov.ph.
3. Attached is the national memorandum for your reference.
4. For your information, guidance and compliance.

DEPED REGIONAL OFFICE 02	
RELEASED	
DATE: 10-07-19	DepEDRO2
BY: (078) 307-3855	https://region2.deped.gov.ph
RECORDS SECTION	Region2@deped.gov.ph
(078) 396-0677	
(078) 396-9728	

Document Code:	FM-ORD-003
Rev.:	00
As of:	07-02-2018



100219212

Republic of the Philippines
Department of Education

DepEd Complex, Meralco Avenue, Pasig City, Philippines
Direct Line: (632) 633-7202/687-4146 Fax: (632) 631-5057
E-mail: diosdado.sanantonio@deped.gov.ph Website: www.deped.gov.ph



Undersecretary for Curriculum and Instruction

MEMORANDUM

DM-CI-2019-0312

TO : BARM EDUCATION SECRETARY
REGIONAL DIRECTORS

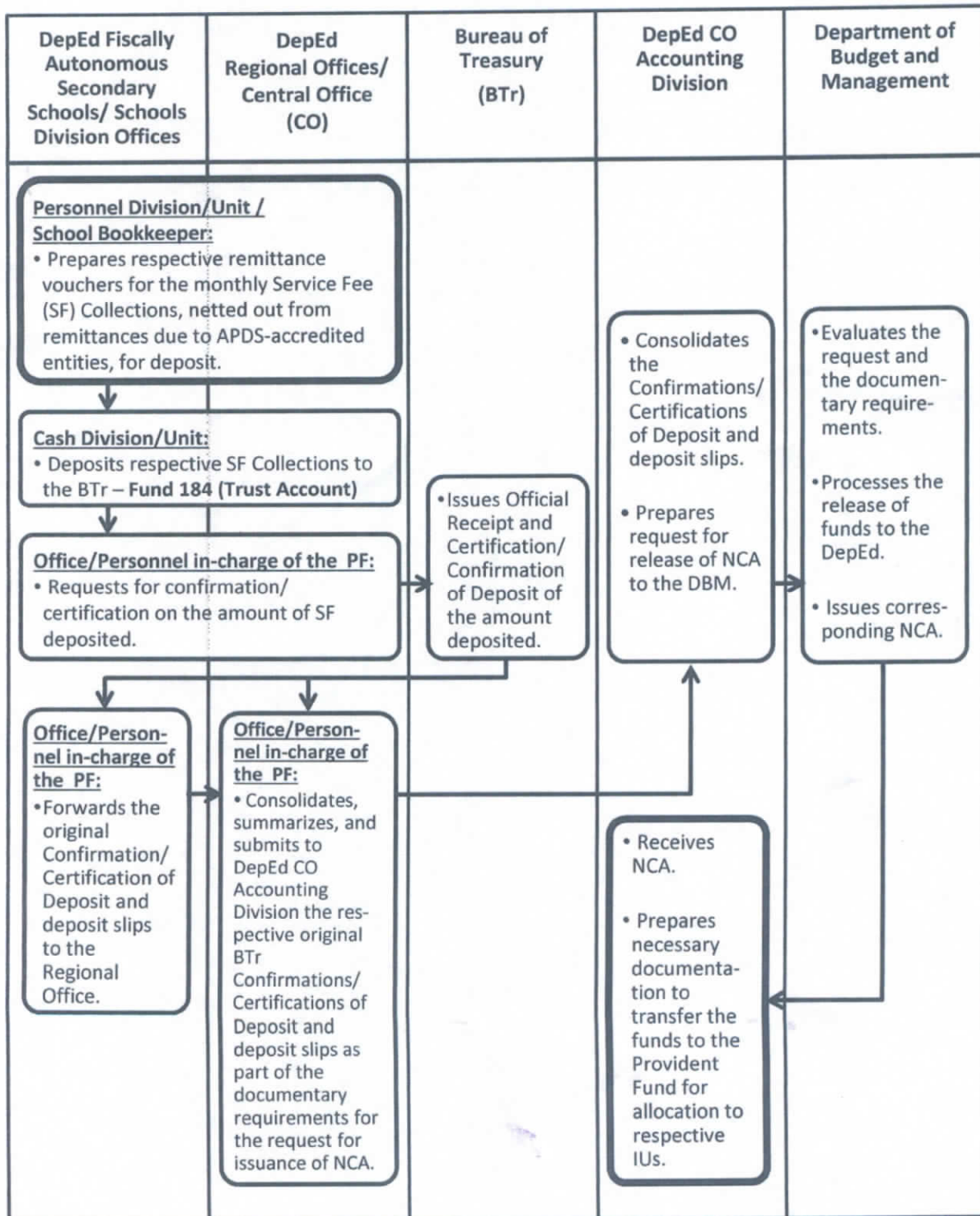
FROM : DIOSDADO M. SAN ANTONIO
Undersecretary for Curriculum and Instruction

SUBJECT : Data on the Implementation of RA 10533, Mother-Tongue Based Multilingual Education (MTB-MLE) in the K to 12 Basic Education Curriculum

DATE : 30 September 2019

1. RA 10533 mandates the implementation of Mother-Tongue Based Multilingual Education (MTB-MLE) in the K to 12 Basic Education Curriculum.
2. As this office attempts to strengthen MTB-MLE implementation, there is a need to gather feedback from the field.
3. It is in this light that the following information are needed from all Regional Offices:
 - a. Abstracts of all research projects on MTB-MLE undertaken by teachers and field officials, including Masters' thesis and PhD/EdD Dissertations for the last five years;
 - b. List of schools/SDOs with highly effective MTB-MLE implementation, including identified enabling factors for effectiveness;
 - c. Consolidated and prioritized lists of factors that hinder the implementation of MTB-MLE, and
 - d. Recommendations on how MTB-MLE implementation may be further strengthened.
4. The said data, which will provide bases for evidence-based decision-making in updating the MTB-MLE policy, shall be submitted to ouci@deped.gov.ph not later than 31 October 2019.
5. Strict compliance with this Memorandum is desired.

PROCESS FLOW ON THE TRANSFER OF SERVICE FEE COLLECTIONS TO DEPED PROVIDENT FUND (PF)



AS